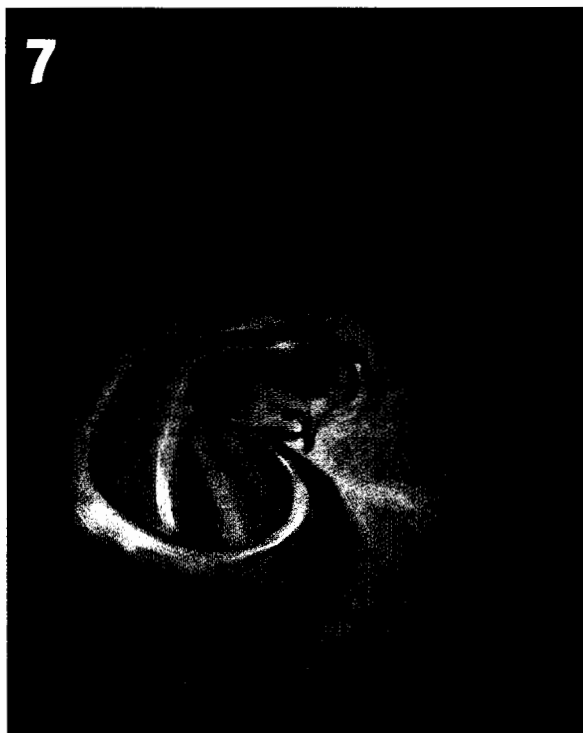


nursing older people

September 2006 Volume 18 issue 8

www.nursingolderpeople.co.uk



Editorial

news

News

News analysis

feature

Cultural concepts at the end of life

The influence of race and ethnicity on acceptable nursing interventions at the end of life

Boosting the immune system

The health implications of immunosenescence

7 Genetics: is it part of your role?

Readers are asked to complete a questionnaire on their views on genetics education in nursing

ask the experts

15 Technical seduction

Has the holistic approach to patient care collapsed? Experts discuss the impact of technical approaches on the essential elements of nursing care

gerontological care and practice

27 Depression and older people

This debilitating condition can mean the difference between life and death

31 Understanding the lives of older gay people

Considering the health and social needs of this group

resources

37 Media watch

Tackling common perceptions about older workers

38 Journal scan

An overview of the literature

40 Email interview

Fiona Chaâbane's interventions in falls risk assessment are helping to reduce incidences of fracture

EDITORIAL ADVISORY BOARD

Ada Allen RGN, BA (Hons), Onc Cert, BSc (Hons), CHC (DN), PG Dip, Community Matron, Bradford

Sharon Blackburn RGN, RMN, CMS, Executive Director, Heart of England Housing and Care

Abigail Masterson MN, BSc, RN, PGCEA, Independent Consultant

Henry A Minardi MSc, BSc, DipN, Dip Counselling and Supervision, Cert Ed, RGN, RMN, Consultant Nurse, Liaison Psychiatry for Older Adults, Central and North West London Mental Health NHS Trust

Janet Monkman BEd, RGN, RMN, RCNT, is an independent consultant

Lorraine Morgan M.Sc (Econ), RGN, RM, RCNT, DipN (Lond), MHEA, Staff Tutor/Academic Manager – Nursing and Health,

Faculty of Health and Social Care, The Open University in Wales
Professor Ian Philp MB, ChB, MD, FRCP, National Director for Older People's Services

Irene Schofield MSc, RGN, RNT, Research Fellow in Gerontological Nursing, Glasgow Caledonian University

Vimla Sharma RGN, CMS, FETC, Matron, Elderly Care, Luton and Dunstable Hospital NHS Trust

Rosemary Strange MSc, BSc (Hons), DipHE, RGN, RMN, HV, Vice President, Registered Nursing Homes Association
Jonathan Webster BA (Hons), DPSN, MSc, RGN, Consultant Nurse, Older People, University College London Hospitals NHS Foundation Trust and Associate Gerontological Nursing Fellow, Royal College of Nursing

Panel of older people
Help the Aged