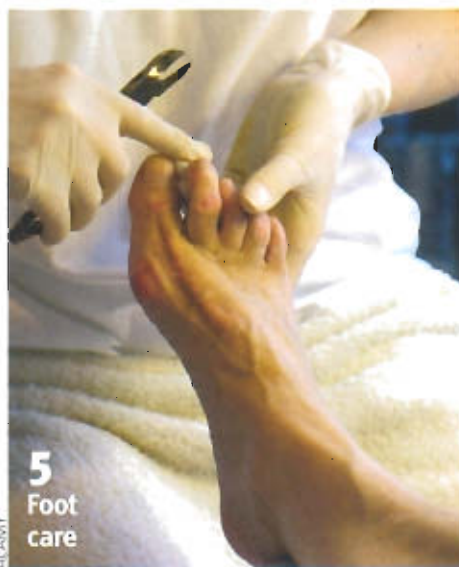
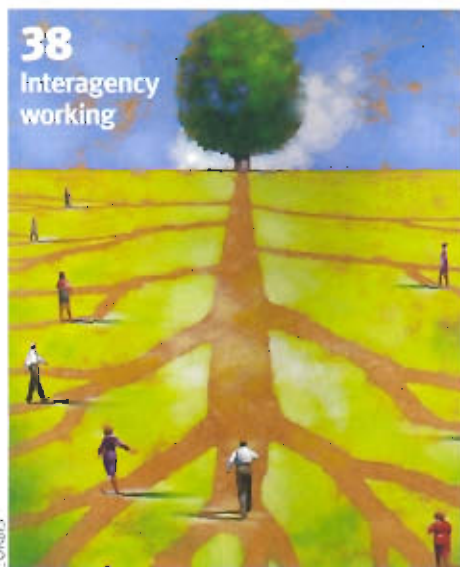


# nursing older people

October 2007 Volume 19 issue 8



## Editorial

Can you recognise elder abuse?

## news

### News

Arthritis patients get surprise relief; White brain matter can predict depressive symptoms

### News analysis

Good foot care helps older people stay active; The importance of co-operating with carers of patients with dementia

### Media watch

You're never too old for a Wii

### Comment

Deborah Sturdy says dementia is everyone's business

## Comment

Les Bright discusses the everyday issues that won't go away

## features

### 12 Unfair care

Disparities in breast cancer care

### 14 Ask the experts

Are patients benefitting from the Single Assessment Process?

### 18 A joint problem

Funding problems are jeopardising the posts of arthritis nurse specialists

## gerontological care and practice

### 24 The UK national study of abuse and neglect among older people

## Support for carers of people with dementia during hospital admission

### 31 The recognition and use of patient expertise on a unit for older people

## Test your knowledge

### Community matrons: Inter-professional and inter-agency working (part five)

## resources

## Journal scan

### 22 Email interview

Caroline Brennan discusses her post as a community-based heart failure specialist nurse for the British Heart Foundation

## EDITORIAL ADVISORY BOARD

**Ada Allen** RGN, BA (Hons), Onc Cert, BSc (Hons), CHC (DN), PG Dip, Community Matron, Bradford

**Sharon Blackburn** RGN, RMN, CMS, Executive Director, Heart of England Housing and Care

**Abigail Masterson** MN, BSc, RN, PGCEA, Independent Consultant

**Henry A Minardi** MSc, BSc, DipN, Dip Counselling & Supervision, Cert Ed, RGN, RMN, Consultant Nurse, Liaison Psychiatry for Older Adults, Central and North West London Mental Health NHS Trust

**Janet Monkman** BEd, RGN, RMN, RCNT, is an independent consultant

**Lorraine Morgan** M Sc (Econ), RGN, RM, RCNT, DipN (Lond), MHEA, Staff

Tutor/Academic Manager – Nursing and Health, Faculty of Health and Social Care, The Open University in Wales

**Professor Ian Philp** MB, ChB, MD, FRCP, National Director for Older People's Services

**Irene Schofield** MSc, RGN, RNT, Research Fellow in Gerontological Nursing, Glasgow Caledonian University

**Vimla Sharma** RGN, CMS, FETC, Matron, Elderly Care, Luton and Dunstable Hospital NHS Trust

**Rosemary Strange** MSc, BSc (Hons), DipHE, RGN, RMN, HV, Vice President, Registered Nursing Homes Association

**Panel of older people**  
Help the Aged