

## Departments



27

### 6 EDITOR'S NOTE

Are you flourishing or floundering in your job?

### 10 LETTERS

Nurse/physician relationships: Improving or not?...wound closure device clarification...speaking up for organ donation...help for nurses with mental illnesses

### 14 MEDICATION ERRORS

Risky reconstitution...pen injector slipup...automated dispensing cabinet error

### 18 ADVICE, P.R.N.

Nicotine patch for a teenager...no heavy lifting

### 20 CLINICAL DO'S AND DON'TS

Obtaining a throat culture

### 22 HEALTHIER AGING

Age-related macular degeneration

### 27 ETHICAL PROBLEMS

Shopping around for treatment... nurse or counselor?...questioning a physician's competence...religious ritual

### 30 CLINICAL QUERIES

Crohn's disease or ulcerative colitis?

### 31 DRUG NEWS

Proton pump inhibitors linked to hip fracture...label changes on the way for some OTC analgesics...treatment for ulcerative colitis approved for kids...new therapy chokes off tumors...FDA approves cyanide antidote kit...don't give cold remedies to infants

### 65 LEGAL QUESTIONS

Consent to treat a teen...problems with infusion equipment...informed consent changes...unsafe staffing

### 67 COMBATING INFECTION

Human papillomavirus vaccine

### 68 HEALTH MATTERS

Small steps against obesity

### 70 DEVICE SAFETY

Keeping hemodialysis catheters connected

### 72 DOING IT BETTER

Catheter securement device

### 75 SELF-TEST

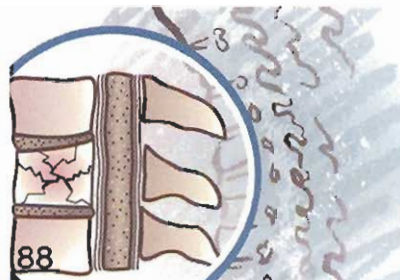
Pediatric challenge

### 78 YOUR LIFE

Eat healthy...watch your back

### 79 DRUG CHALLENGE

Match drug names to their ingredients and indications



88

### 88 ACTION STAT

#### Suspected cervical spine injury

By Bronwynne Carpico, RN, CCRN, BSN  
Act fast to protect your patient's spinal cord after a fall.

#### 17 About Nursing2007

#### 80 Advertisers' Index

#### 82 Classified Advertisements

#### \*After page 64...

#### Hospital section feature:

Acute cholecystitis

#### Critical care feature:

Cerebral aneurysm rupture

\*If you work in a hospital or in critical care but don't see that section in this issue, please call our customer service department at 1-800-879-0498.

## Practice pointers from this issue of Nursing2007

- Using prefilled saline syringes to reconstitute medication can lead to potentially lethal errors if the syringe leaves the preparer's hands before the drug is administered (p. 14).
- When managing acute pain in a drug-dependent patient, use long-acting medications such as controlled-release morphine (MS Contin) for long-term relief along with adequate breakthrough medications (p. 40).
- Failing to file an event report after a sentinel event violates facility policy, JCAHO requirements, and possibly your state's reporting laws (p. 45).
- Many Jehovah's Witnesses will accept infusions of minor blood products, such as albumin clotting factors (p. 55).
- Uninfected arterial leg ulcers look like round punched-out craters with a pale, dry base (p. 60).

## CEs coming next month

Responding to atrial fibrillation  
Vaccine safety

### On the Web...

Go to [www.Nursing2007.com](http://www.Nursing2007.com) to take the Nursing2007 job satisfaction survey.