

Departments

6 Editor's Memo

7 New! Lab Logic

12 Advocacy in Practice

15 Legal File

52 Drug News: Ramelteon

56 Product News

57 Guide to Care for Patients: Back Pain

59 Literature Review

70 Medication Update

Next Month

CE Offering: Improved Outcomes for Restless Legs Syndrome

CE Offering: Recognition and Management of Major Depression

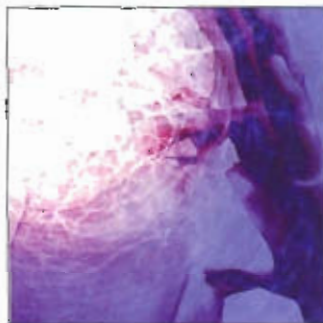
Bonus Content

NEUROLOGICAL CARE

47 When A Headache is Really a Brain Tumor

Ellie Z. Franges, MSN, APRN-BC, CNRN

Headache is one of the most common complaints seen in the primary care setting. Secondary headache is a symptom of a more serious condition. If the possibility of primary headache has been ruled out, then the primary care provider must have the ability to accurately identify the cause. Certain characteristics in a patient's medical history may indicate the possibility of a brain tumor.



Manuscripts

The *Nurse Practitioner* is a refereed journal and articles are accepted on a nonexclusive basis. Submitted manuscripts must contain original material and are reviewed with the explicit understanding that their essential substance or contents have not been or will not be submitted for publication elsewhere. Lippincott Williams & Wilkins, no responsibility for the statements and opinions advanced by contributors. The *Nurse Practitioner*, The American Journal of Primary Healthcare is registered in the U.S. Patent Office, 1975. The names and contents are copyrighted. © 2006 Lippincott Williams & Wilkins. No responsibility is assumed by the publisher for any injury and/or damage to persons or property as a matter of products liability, negligence or otherwise, or from any use or operation of any methods, products, instructions or ideas contained in the material herein. No suggested test or procedure should be carried out unless, in the reader's judgment, its risk is justified. Because of rapid advances in the medical sciences, we recommend that the independent verification of diagnoses and drug dosages should be made. Discussions, views, and recommendations as to medical procedures, choice of drugs, and drug dosages are the responsibility of the authors.

Reprint Information

Quotes of up to 500 words from any issue are permitted, for noncommercial purposes, with credit to The *Nurse Practitioner*, except for articles bearing a copyright notice of others. Authorization to photocopy (reproduction of articles via photocopy equipment) up to 100 copies of items from The *Nurse Practitioner* for educational, non-commercial purposes is granted if no text by Lippincott Williams & Wilkins, except for articles bearing a copyright notice of others. Requests for other purposes or for over 100 copies are authorized provided that the appropriate fees are paid to the Copyright Clearance Center (CCC), 222 Rosewood Dr., Danvers, MA 01923, telephone 978-750-8400 (ref). The *Nurse Practitioner*, ISSN 0361-1817, appearing volume, number, date and title of article.

Microfilm

The journal is available on microfilm from University Microfilms, 300 North Zeeb Road, Ann Arbor, MI 48106, phone 313-761-4700.

Notice

The *Nurse Practitioner* is the official journal of The New York State Coalition of Nurse Practitioners. However, the publisher of The *Nurse Practitioner* is solely and completely responsible for the editorial and advertising content of the journal. The New York State Coalition of Nurse Practitioners does not edit or review the journal prior to publication and accepts no responsibility for errors, omissions, or the contents of the journal.

Periodically, newsletters and information from various NP organizations will be bound into The *Nurse Practitioner*. We hope readers will find these pieces of interest. The views expressed in the pieces are those of the organization. The *Nurse Practitioner* does not necessarily support the opinions expressed or warrant the accuracy of the information presented.



and The *Nurse Practitioner* are registered with the U.S. Patent and Trademark Office.

The *Nurse Practitioner*, The American Journal of Primary Healthcare (ISSN 0361-1817) is published 12 times per year (monthly) by Lippincott Williams & Wilkins. Periodicals postage paid at Hagerstown, MD, and additional mailing offices. Subscription Information: Individual Rates: \$55 a year in the U.S. and \$105 a year elsewhere. Institutional Rates: \$179 a year in the U.S. and \$209 a year elsewhere. Student Rate: \$29 a year (U.S. only). All subscription rates are payable in U.S. funds. Send subscription orders and address change information to: The *Nurse Practitioner*, P.O. Box 1550, Hagerstown, MD, 21740. Single copies and back issues \$7. Claims for missing issues can be ordered only up to 3 months for domestic addresses, 6 months for foreign addresses. Duplicate copies will not be sent to replace ones undelivered through failure to notify Lippincott Williams & Wilkins of change of address.

© 2006 by Lippincott Williams & Wilkins.

POSTMASTER: Send change of address to The *Nurse Practitioner*, P.O. Box 1550, Hagerstown, MD, 21740. Publications Mail Agreement No. 40048736. Return Undeliverable Canadian Addresses to: Circulation Dept., or DPGM, 4960-2 Walker Road, Windsor, ON N9A 6J3.



The *Nurse Practitioner* is Indexed...

in the *Cumulative Index to Nursing & Allied Health Literature (CINAHL)*, *Index Medicus*, *Nursing Abstracts*, *RNIndex Top 100*, *Hospital Literature Index*, *International Nursing Index*, *International Pharmaceutical Abstracts*, and the *SocioEconomic Bibliographic Information Base*.